

# SCHOOL TRAFFIC MANAGEMENT PLAN

It's all part of Council's plan



School name:

St Peter Chanel School

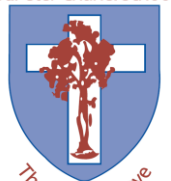
---

School address:

41 Chaprowe Road, The Gap, Q 4061

---

St Peter Chanel School



The Truth In Love



Dedicated to a better Brisbane

## Introduction

Communicating the school's traffic management arrangements and issues to the school community is critical to ensure everyone, including parents, carers and students, understand the transport options that are available and the rules that need to be followed to ensure they can travel to and from school in a safe and efficient manner.

### School overview

<b>School Name:</b> St Peter Chanel School	
<b>Address:</b> 41 Chaprowe Road, The Gap, Qld, 4061	
<b>Year levels at the school:</b> Prep – Year 6	<b>Administration contact number:</b> 3300 1202
<b>School population:</b> 209	<b>Expected population in three years' time:</b> Approx 180

### Traffic management plan endorsement

Name	Position	Date
Paul McGlone	Acting School Principal	February 2023
Nadine Pennisi	WHSO	February 2023

## Stop Drop and Go Zone

Stop, Drop and Go Zones are designed to act like a flowing taxi rank with a maximum stopping time of two minutes.

St Peter Chanel's one Stop, Drop and Go Zone is located on Chaprowe Road at the front of the school, as per Figure 1. The zone has a four-car capacity and operates as a loading zone between 7.30am – 9:00am and 2.00pm – 3.30pm. No parking is allowed in the zone during these times.

The following safety protocols are in place for the safe use of the Stop, Drop and Go Zone:

- A staff member and often, a parent volunteer traffic monitor are on duty at the zone between 3.00pm and 3.20pm.
- There is no right turn into the zone from Chaprowe Road between 8.00am – 9.00am and 2.45pm – 3.30pm, Monday to Friday. To access the zone during these hours, parents must drive around the block. Take the first left after entering Chaprowe Road into Toolara Street, right into Trebonne Street, right into Tilquin Street, then right into Chaprowe Road and left into the zone (see Figure 1b). There is no right turn onto Chaprowe Road when exiting the zone.
- Parents and carers are to remain in their vehicle at all times when using the zone and are to keep moving forward as cars leave.
- Parents and carers are requested to display their family name on their vehicle's visor.
- Children must wait in the school grounds to be picked up from the zone and are not to be picked up from the queue along Chaprowe Road.

- Parents and carers are asked to try to delay or stagger their arrival time to give children time to reach the zone and to avoid unnecessarily long queues along Chaprowe Road.
- Please show consideration to other drivers arriving by not stopping in the middle or back of the zone to un/load, cutting into the queue or double parking.
- In the morning, only the first two to three cars in the line should unload their children. Any subsequent cars are asked to wait patiently and move in turn to the top of the line and unload from this point only.
- In the afternoon, once the parent or carer has reached the front of the line, the staff member and/or traffic monitor on duty will call out the child's name based on the name displayed on the visor, or will ask the driver for their surname. Children will only be permitted to get into the vehicle at the front of the line at the specified loading point and are not permitted to get into the cars located in the second or third spot. This is to prevent these cars from driving around the first car and accidentally hitting a pedestrian. An A-frame stand will block the outside lane in the afternoons.
- If a parent or carer reaches the top of the queue and the child is not at the waiting point, the staff member and/or traffic monitor will ask you to drive around the block (see figure 1b) to re-join the back of the queue. This ensures the smooth flow of the zone.
- Parents and carers must follow instructions given by the staff member and traffic monitor. Motorists who fail to obey instructions from the loading zone supervisor may be prohibited from using the Stop, Drop and Go Zone in the future.



Figure 1: Map of Stop, Drop and Go Zone

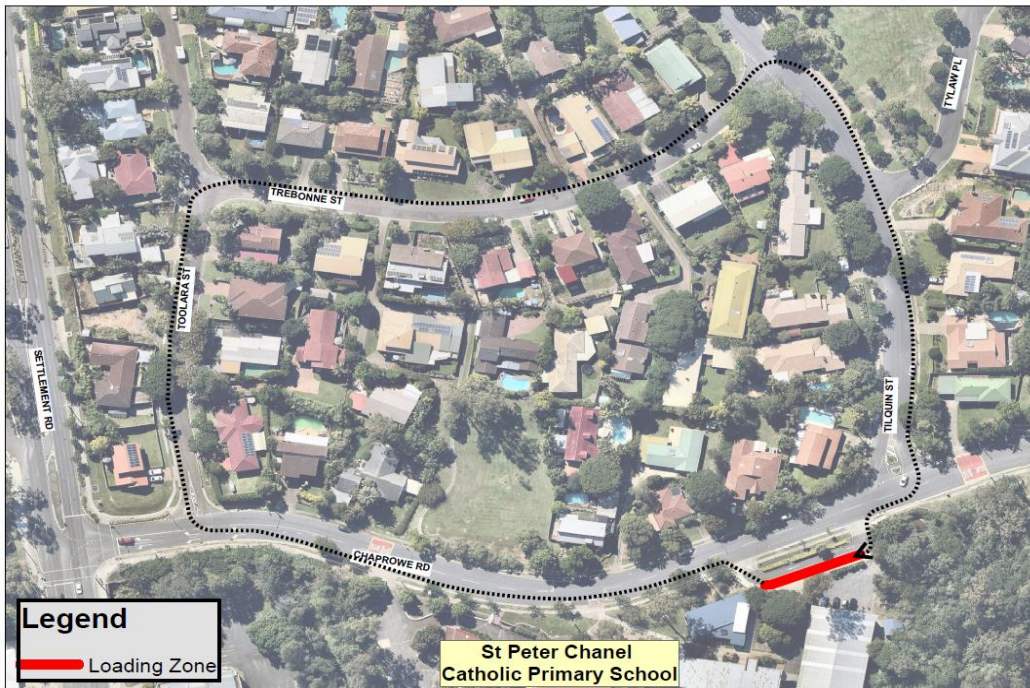


Figure 1b: Map of how to go around the block.

## Pedestrian Crossing

A designated pedestrian crossing is located on Chaprowe Road and is supervised from 8.05am - 8.50am and 2.50pm - 3.20pm each day of the school year. School crossing supervisors use the following aids and personal protective equipment (PPE):

- Whistle
- Crossing flags
- High visibility jacket
- Hat
- Stop sign

## Parking Areas

There are limited parking spaces available for parents on school grounds; however, there is ample street parking on Chaprowe Road and the surrounding streets. Our school encourages parking in these areas away from the school, as it can reduce traffic congestion at the school entrance. Figure 2 provides a map outlining the location of St Peter Chanel's:

- Bus zone
- Loading zone
- No limit parking
- No park/stopping areas
- Walking path
- School car park
- Staff car park

Parents and visitors are required to obey reverse parking and entry/exit signs in all parking areas. These are in place to minimise the risks associated with vehicle parking within the school grounds.



Figure 2: Map of parking areas

The **Staff Carpark** at the front of the school, behind the Stop, Drop and Go Zone, is reserved for school and OSHC staff.

There are a limited number of car parks in the **Oval/Lower School Carpark**. This area also has a designated disabled parking spot and a space reserved for the winner of our annual fund-raiser, which gives that person sole access to the car space for the school year. Parents, carers and staff using this car park area are asked to be mindful to not block the entrance and departure area and must not park against the yellow line or on striped out areas.

The **Church Carpark** has designated parking spaces available to parents; however, please be mindful of and respectful towards parishioners who need to access these spaces, particularly on Wednesday and Thursday mornings whilst Mass is being celebrated. Further, there is to be no parking against the yellow lines or on striped out areas.

**Deliveries**

Authorised deliveries are permitted to the school’s Staff Car Park off Chaprowe Road following prior arrangements being made with the school.

The following safety controls are in place to ensure that the delivery of items to the workplace is undertaken in a safe manner:

- All delivery drivers must report to Administration before entering the school grounds. Drivers will be directed to designated delivery drop off points by reception staff and if vehicle entry into the school grounds is required, a staff member (often the groundsman) will walk with the vehicle and act as spotter.
- School speed limits are set at 5 km/hr.
- A boom gate in the driveway located off the Stop, Drop, Go Zone is kept latched, restricting access to school grounds.
- The speed bump along the road leading to the Church car park is a speed control device for vehicles entering the school grounds from that area.

Bollards prevent vehicles from accessing pathways used by students.

**Bus Zones** are reserved for school and commuter bus services only. The Bus Zone operates from 8.00am – 4.00pm on school days.

## Special events

Traffic control requirements for special events may vary and control measures will be determined through a Risk Assessment.

The following safety arrangements are in place to minimize the risks associated with special events, in conjunction with previously documented control measures:

- An appropriate number of traffic controllers will be in place for all special events to restrict and/or direct traffic to and from the workplace.
- Hi-vis vests are to be worn by volunteers for school event traffic management.
- The sprinkler system heads are to be clearly marked for visual identification, so any vehicle moving over the oval can avoid them.

## Safe passage of vehicles within the school

The following safety arrangements and features are in place for when large vehicles or mobile plants such as tractors, golf buggies or ride-on mowers are required to move around the school:

- Vehicles are not permitted to move around school grounds from 8.10am - 9.00am and 2.55pm - 3.20pm, which is peak pedestrian time, unless there is an announcement over the PA system prior to entry and movement. A spotter must be present, always assisting with vehicle movement.
- Prior to entering the school, drivers of any vehicles must report to Administration to arrange for a member of staff to act as a spotter to supervise onsite vehicle movements.
- Worksite speed limits are set at 5 km/hr.
- During school hours the ride-on mower must access the oval by leaving the groundsman's shed, travelling along the footpath past the school and Church, down through the Church carpark, through to the Prep carpark and onto the oval.
- Vehicles travelling along the walkway between the Faber and Futuna buildings must take extra precautions as the walkway leads to uneven ground and is a high foot traffic area, with a blind corner.

## Public and active travel

Public transport helps to reduce traffic congestion and improve air quality around schools.

Students who learn to use public transport also gain valuable skills for travelling to work and higher education institutions after leaving school.

Parents can see what public transport options may be available to them by visiting TransLink's Journey Planner at [www.translink.com.au](http://www.translink.com.au), or by phoning TransLink directly on 13 12 30.

Encouraging students to walk, ride a bike or scooter to school, either all or part of the way, not only helps ease traffic congestion and decrease pollution but also promotes a healthy lifestyle and teaches children valuable road safety skills.

There is a pedestrian crossing at the lights on the corner of Settlement and Chaprowe Roads as well as a crossing outside the school grounds on Chaprowe Road. The school crossing is supervised each morning from 8.10am – 8.50am and each afternoon between 2.50pm – 3.20pm. Parents and children are asked to use these crossings appropriately.

If travelling by bus, the closest stop is located on Settlement Road and is serviced by the 362, 380 and 381 bus routes. The 385 bus route runs along Waterworks Road, with the closest stop being at the intersection of Waterworks and Settlement Roads.